

**Anexa nr. 56 - Formaldehida - vant de la NV – surse tehnologice,trafic intern,
mediere 24 h**

HARTA de DISPERSIE a POLUANTILOR in ATMOSFERA

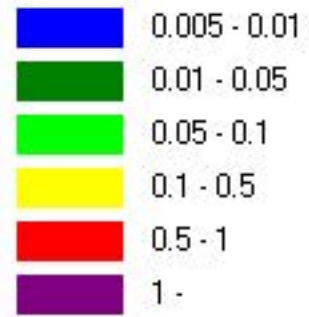
Poluant: formaldehida

Situatie modelata: medie pentru 24 ore

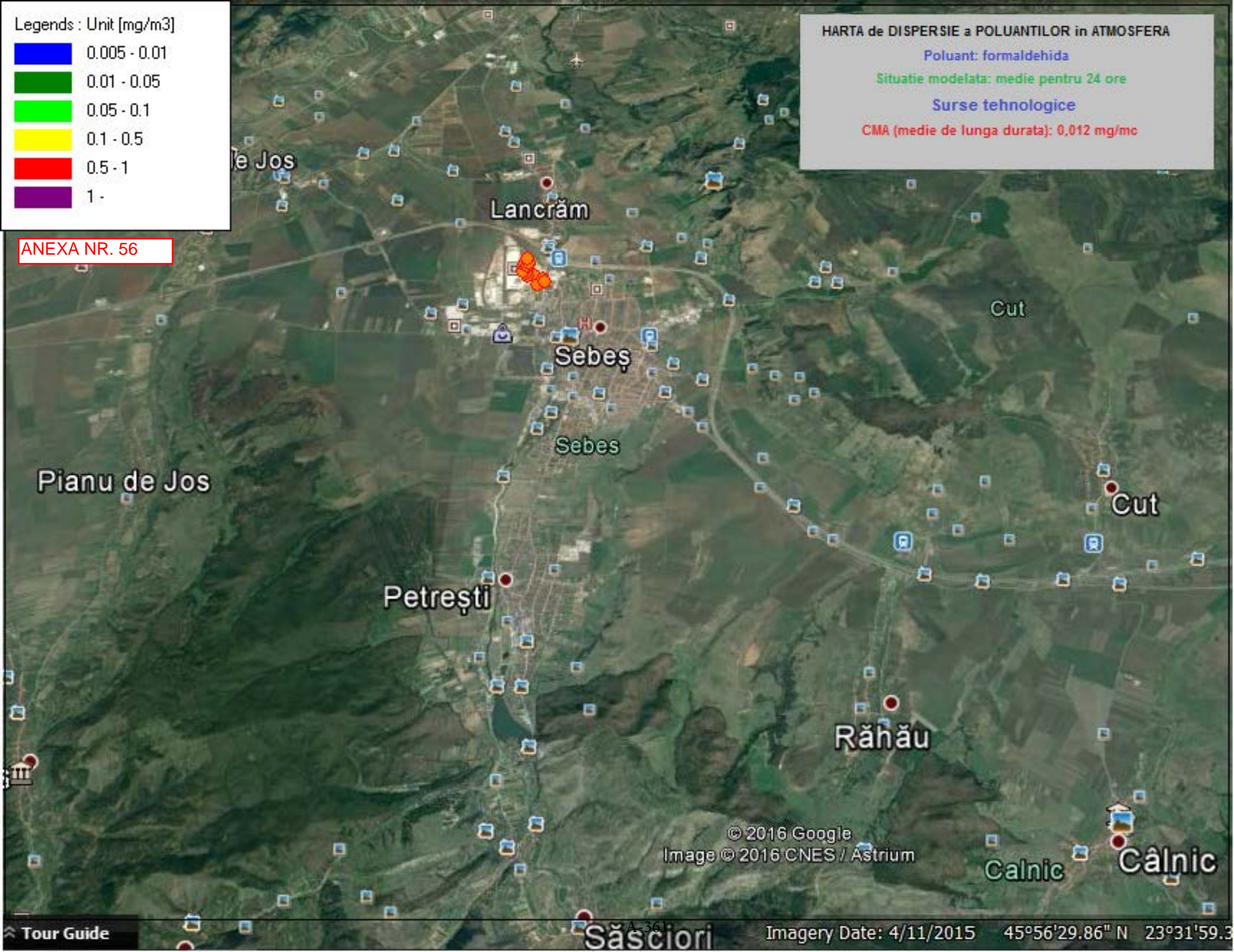
Surse tehnologice

CMA (medie de lunga durata): 0,012 mg/mc

Legends : Unit [mg/m3]



ANEXA NR. 56



© 2016 Google
Image © 2016 CNES / Astrium

Imagery Date: 4/11/2015 45°56'29.86" N 23°31'59.3

Tour Guide

Săsciori

Anexa nr. 57 - Formaldehida, in $\mu\text{g}/\text{mc}$ – vant de la NV- surse tehnologice, trafic intern, mediere 24 h

HARTA de DISPERSIE a POLUANTILOR in ATMOSFERA

Poluant: formaldehida

Situatie modelata: medie pentru 24 ore

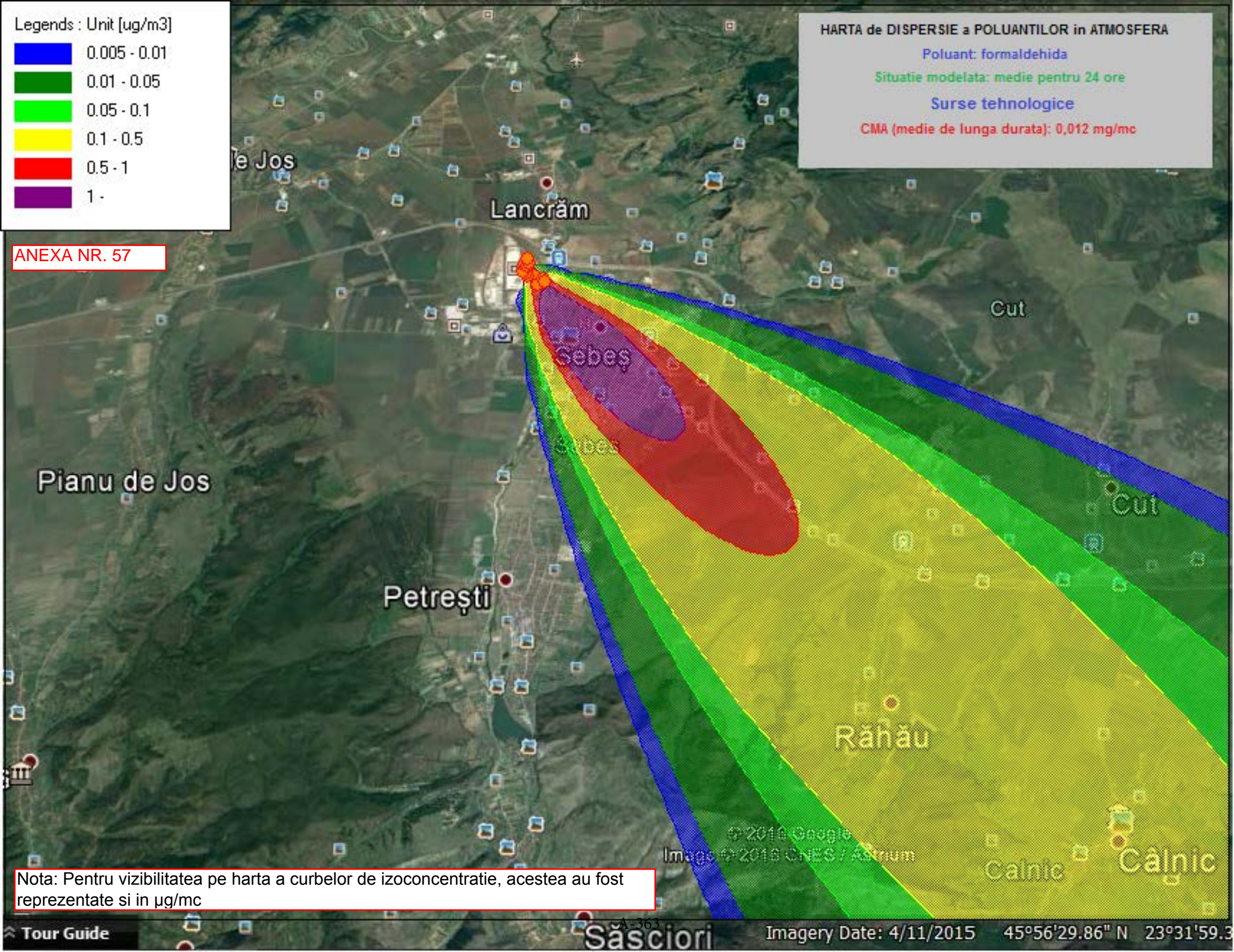
Surse tehnologice

CMA (medie de lunga durata): 0,012 mg/mc

Legends : Unit [$\mu\text{g}/\text{m}^3$]



ANEXA NR. 57



Nota: Pentru vizibilitatea pe harta a curbelor de izoconcentratie, acestea au fost reprezentate si in $\mu\text{g}/\text{mc}$

**Anexa nr. 58 - Formaldehida – vant de la NV – surse mobile, trafic extern, mediere 24
h**

HARTA de DISPERSIE a POLUANTILOR in ATMOSFERA

Poluant: formaldehida

Situatie modelata: medie pentru 24 ore

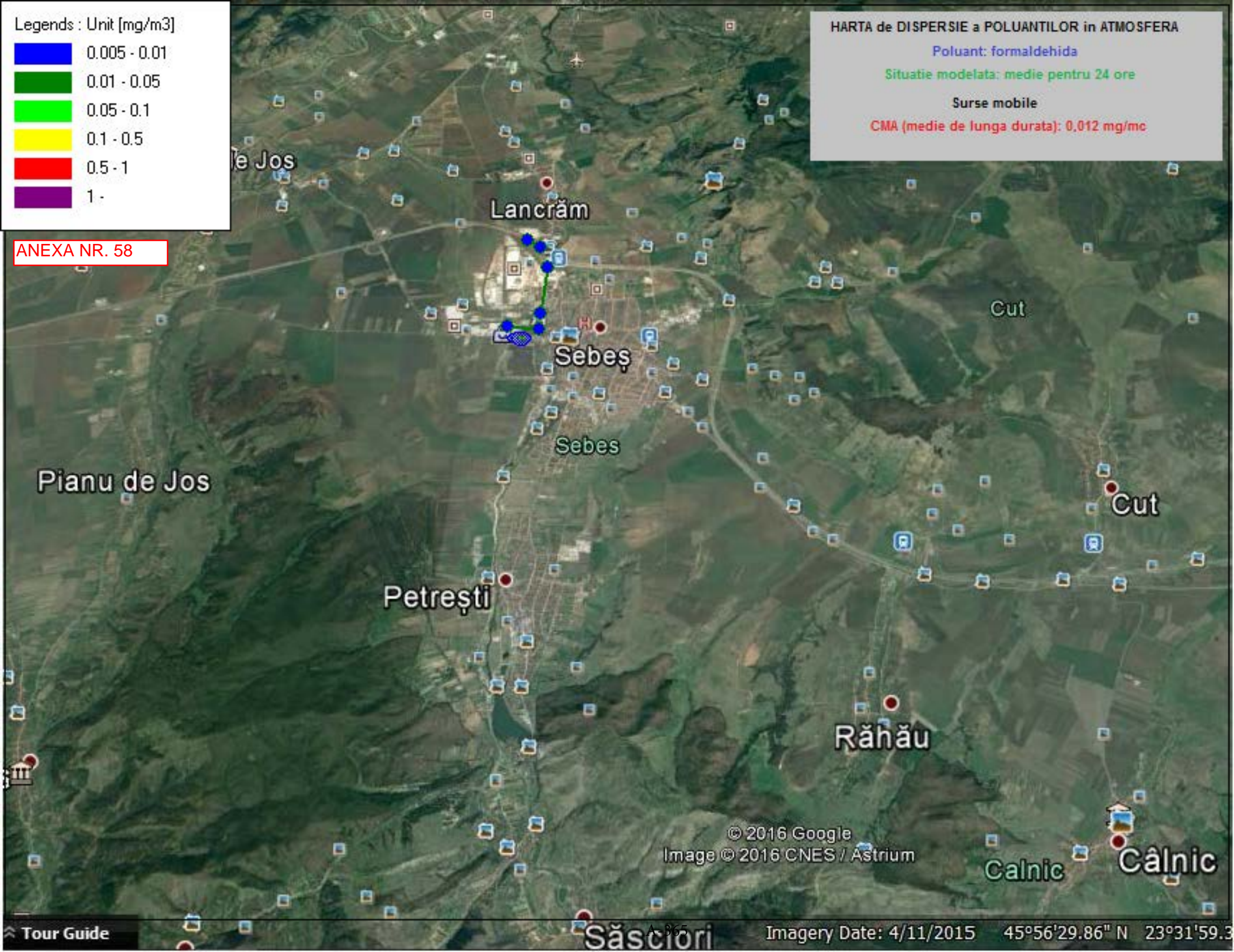
Surse mobile

CMA (medie de lunga durata): 0,012 mg/mc

Legends : Unit [mg/m3]

- 0.005 - 0.01
- 0.01 - 0.05
- 0.05 - 0.1
- 0.1 - 0.5
- 0.5 - 1
- 1 -

ANEXA NR. 58



© 2016 Google
Image © 2016 CNES / Astrium

Anexa nr. 59 - Formaldehida, in $\mu\text{g}/\text{mc}$ – vant de la NV – surse mobile, trafic extern, mediere 24 h

HARTA de DISPERSIE a POLUANTILOR in ATMOSFERA

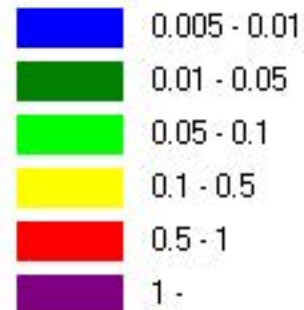
Poluant: formaldehida

Situatie modelata: medie pentru 24 ore

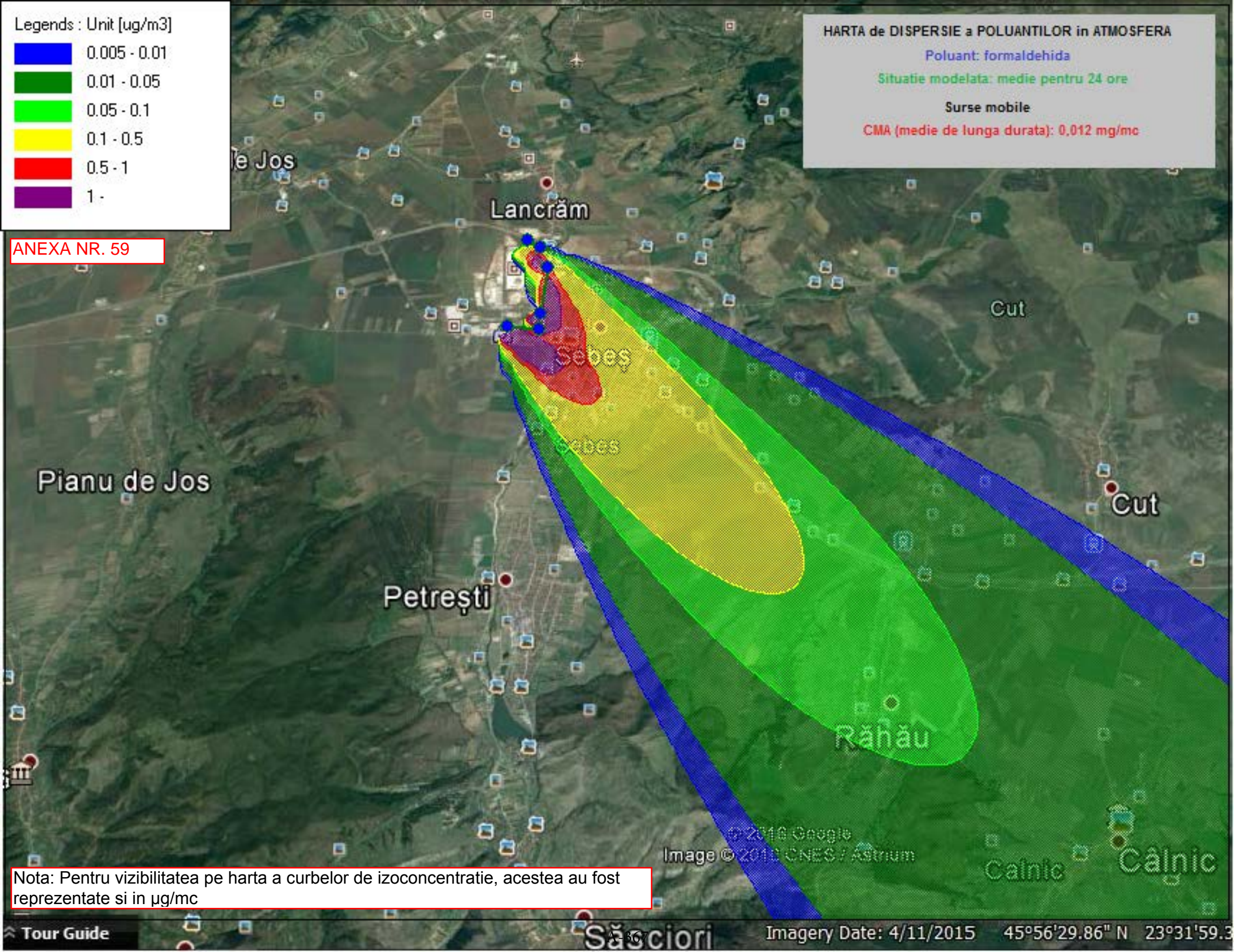
Surse mobile

CMA (medie de lunga durata): 0,012 mg/mc

Legends : Unit [$\mu\text{g}/\text{m}^3$]



ANEXA NR. 59



Nota: Pentru vizibilitatea pe harta a curbilor de izoconcentratie, acestea au fost reprezentate si in $\mu\text{g}/\text{mc}$

Anexa nr. 60- Formaldehida vant de la NV – surse tehnologice + surse mobile (trafic intern) KRONOSPAN SEBES - KRONOCHEM SEBES + surse mobile trafic extern, mediere 24 h

HARTA de DISPERSIE a POLUANTILOR in ATMOSFERA

Poluant: formaldehida

Situatie modelata: medie pentru 24 ore

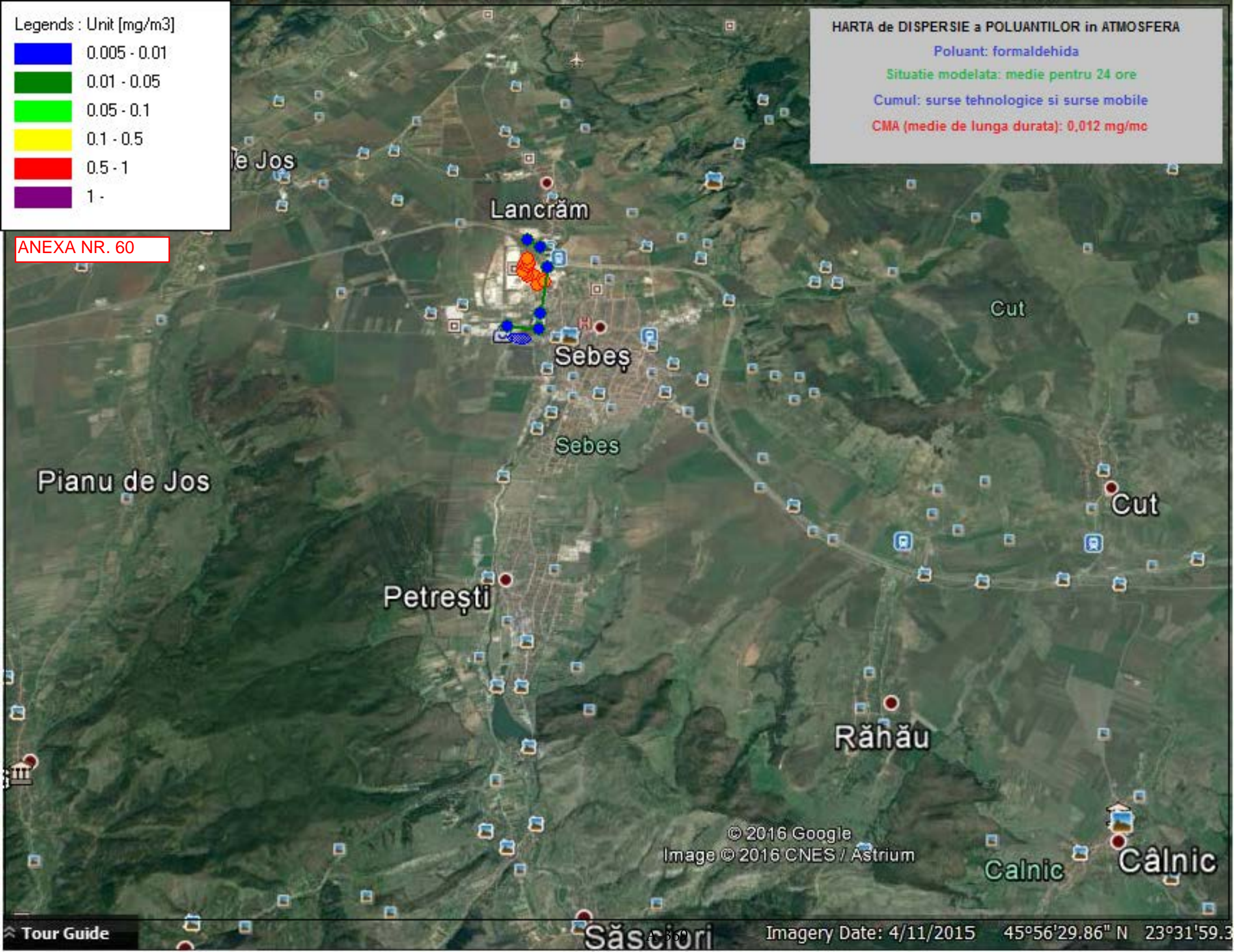
Cumul: surse tehnologice si surse mobile

CMA (medie de lunga durata): 0,012 mg/mc

Legends : Unit [mg/m3]

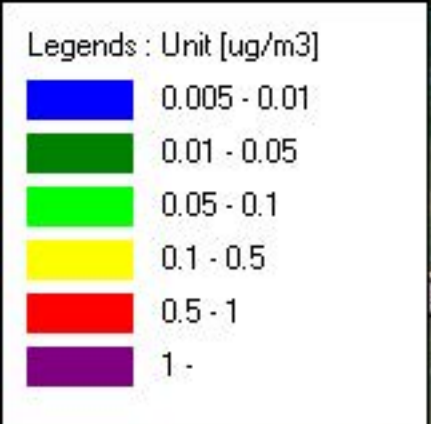
- 0.005 - 0.01
- 0.01 - 0.05
- 0.05 - 0.1
- 0.1 - 0.5
- 0.5 - 1
- 1 -

ANEXA NR. 60



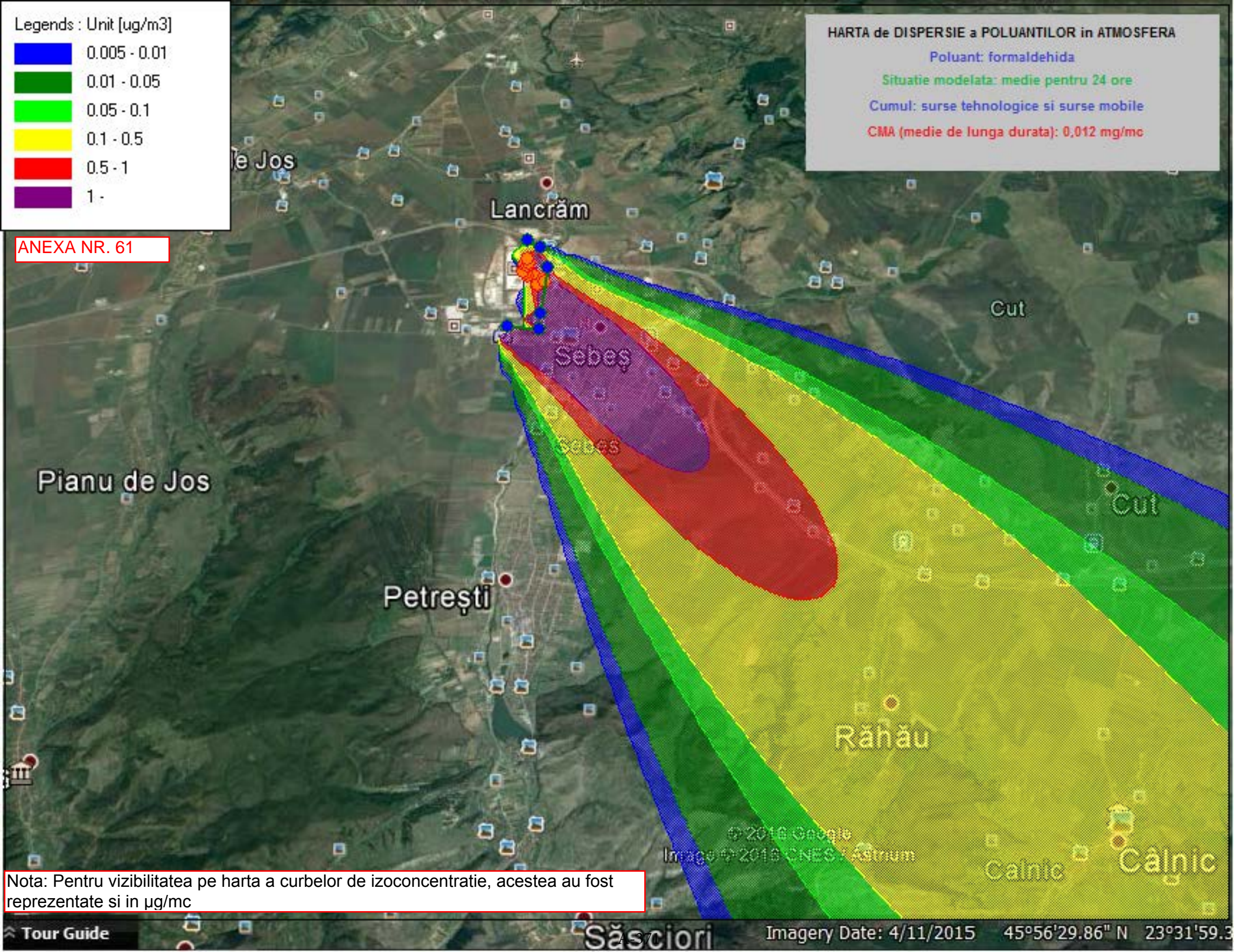
© 2016 Google
Image © 2016 CNES / Astrium

Anexa nr. 61- Formaldehida vant de la NV, in $\mu\text{g}/\text{mc}$ – surse tehnologice + surse mobile (trafic intern) KRONOSPAN SEBES - KRONOCHEM SEBES + surse mobile trafic extern, mediere 24 h



HARTA de DISPERSIE a POLUANTILOR in ATMOSFERA
 Poluant: formaldehida
 Situatie modelata: medie pentru 24 ore
 Cumul: surse tehnologice si surse mobile
 CMA (medie de lunga durata): 0,012 mg/mc




ANEXA NR. 61



Nota: Pentru vizibilitatea pe harta a curbilor de izoconcentratie, acestea au fost reprezentate si in $\mu\text{g}/\text{mc}$

**Anexa nr. 62 - Metanol, vant de la NV – surse tehnologicice KRONOSPAN +
KRONOCHEM, mediere 24 h**

Legends : Unit [mg/m³]

	0.005 - 0.01
	0.01 - 0.05
	0.05 - 0.1
	0.1 - 0.5
	0.5 - 1
	1 -

HARTA de DISPERSIE a POLUANTILOR in ATMOSFERA

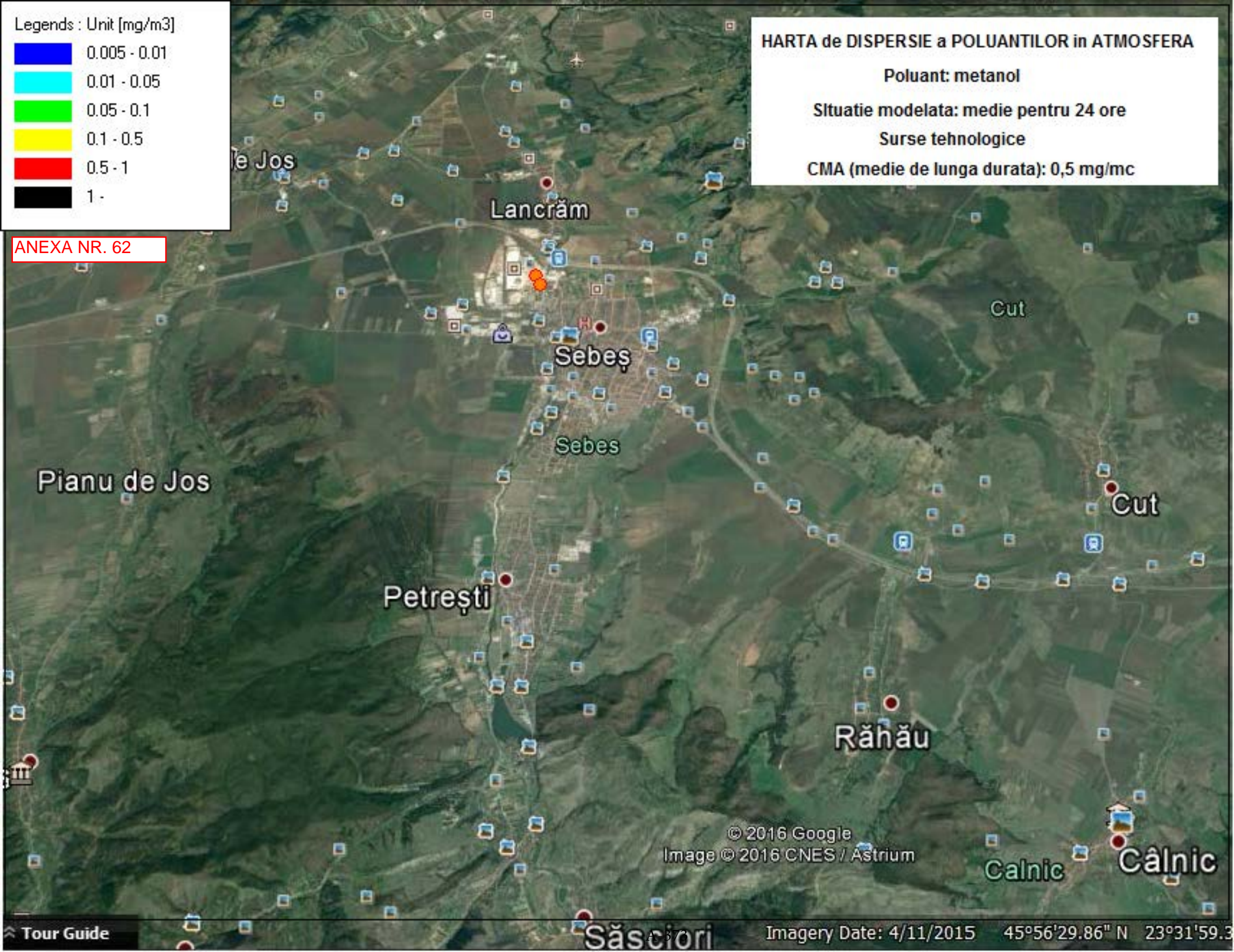
Poluant: metanol

Situatie modelata: medie pentru 24 ore

Surse tehnologice

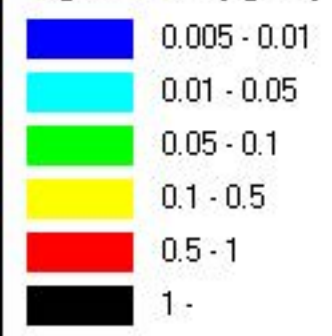
CMA (medie de lunga durata): 0,5 mg/mc

ANEXA NR. 62



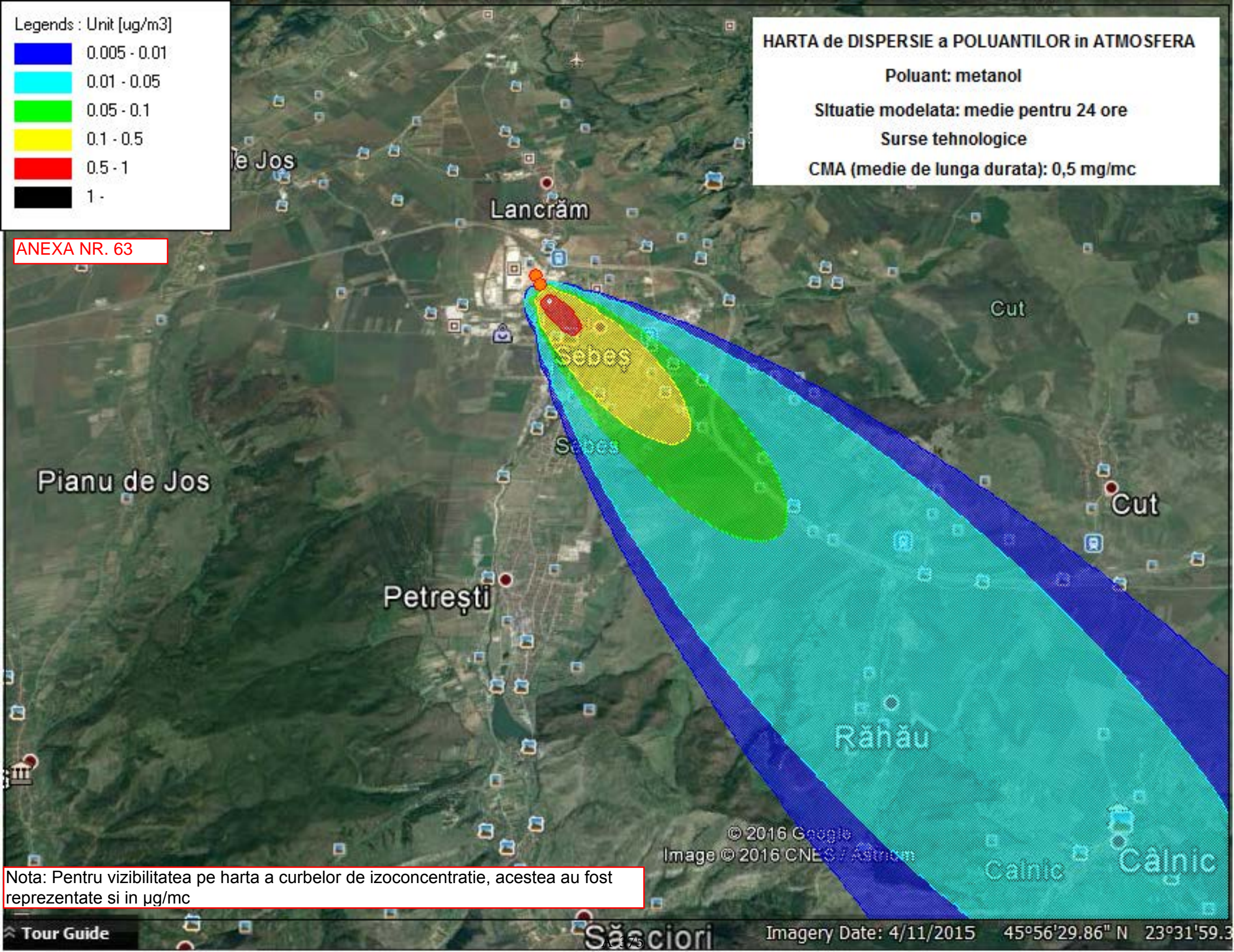
**Anexa nr. 63 - Metanol, vant de la NV – surse tehnologice KRONOSPAN +
KRONOCHEM, mediere 24 h**

Legends : Unit [$\mu\text{g}/\text{m}^3$]



HARTA de DISPERSIE a POLUANTILOR in ATMOSFERA
Poluant: metanol
Situatie modelata: medie pentru 24 ore
Surse tehnologice
CMA (medie de lunga durata): 0,5 mg/mc

ANEXA NR. 63



Nota: Pentru vizibilitatea pe harta a curbelor de izoconcentratie, acestea au fost reprezentate si in $\mu\text{g}/\text{m}^3$